

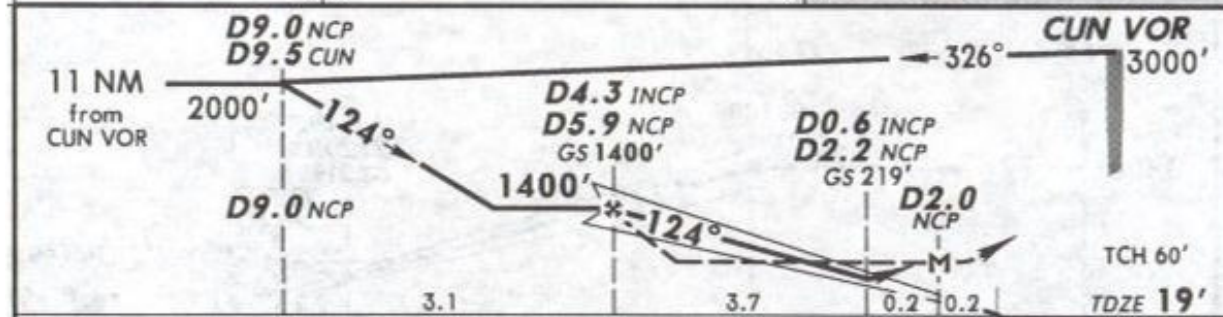
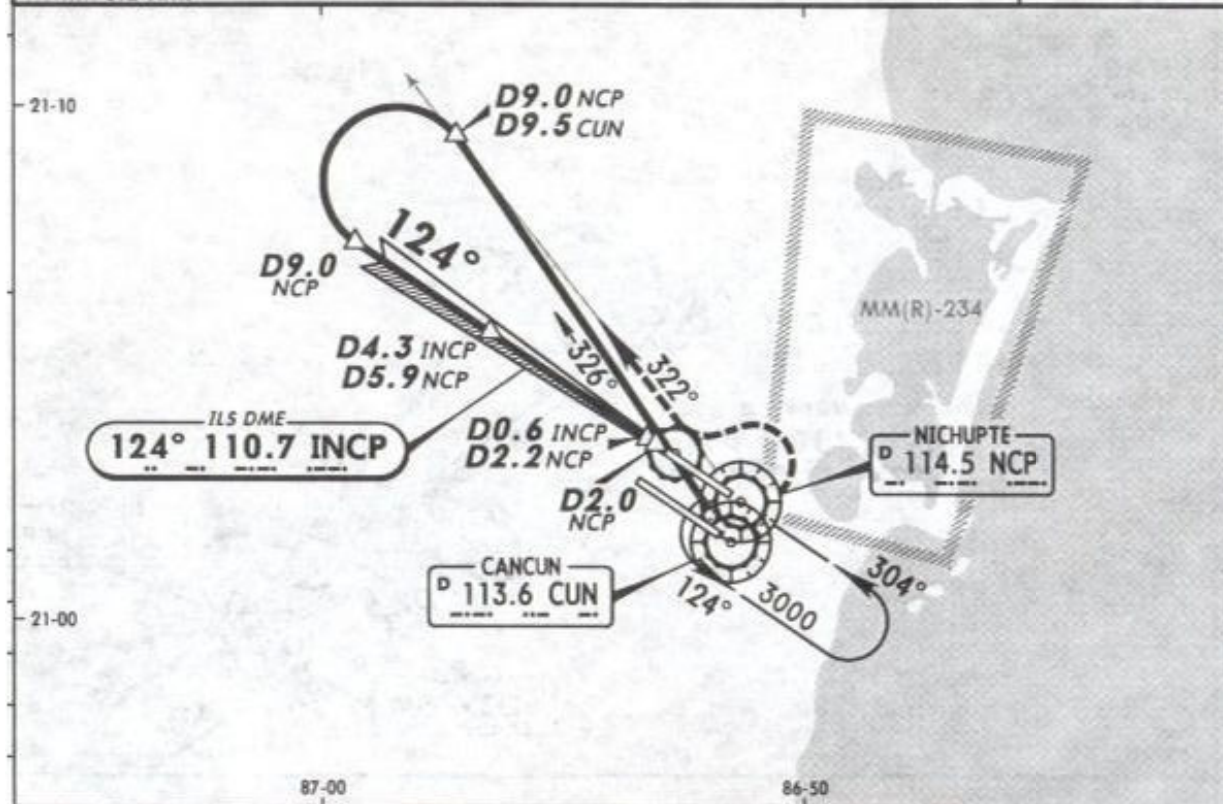
MMUN/CUN
CANCUN INTL

13 NOV 09

(11-2)

CANCUN, MEXICO
ILS DME or LOC 2 Rwy 12L

*ATIS 127.7	*CANCUN Approach (R) 121.1	CANCUN Arrival 123.2	CANCUN Tower 118.6	*Ground 121.7
LOC INCP 110.7	Final Apch Crs 124°	GS D4.3 INCP D5.9 NCP 1400' (1381')	ILS DA(H) (CONDITIONAL) 219' (200')	Apt Elev 20' TDZE 19'
<p>MISSED APCH: LEFT turn to intercept NCP VOR R-322 outbound to D9.0 NCP, then turn LEFT to intercept NCP VOR R-304 inbound to NCP VOR at the minimum holding altitude.</p> <p>Alt Set: MB (IN on req) TDZ Elev: 1 MB Trans level: FL 195 Trans alt: 18500' 1. DME/ILS usable with DME equipped aircraft with accurate instrument reading within 0.2 NM.</p>				
				<p>2000'</p> <p>MSA CUN VOR</p>



Gnd speed-Kts	70	90	100	120	140	160	<p>ALS</p> <p>REIL</p> <p>PAPI</p>		<p>NCP</p> <p>114.5 to D9.0</p> <p>R-322 NCP</p>	
GS	3.00°	377	484	538	646	753				
MAP at D2.0 NCP										

STRAIGHT-IN LANDING RWY 12L				CIRCLE-TO-LAND		
ILS		LOC (GS out)		Not Authorized Southwest of Rwy 12L/30R		
DA(H) 219' (200')		MDA(H) 420' (401')				
FULL	ALS out		ALS out	Max Kts	MDA(H)	
A				90	480' (460') - 1	
B				120		
C	1/2	3/4	3/4	140	480' (460') - 1 1/2	
D			1	165	580' (560') - 2	
ALL Non Skd	DA(H) 271' (252')		1 1/4			
	3/4		1 1/2			